



SEALS HQ

Combi Seal 10

Combi Seal 10 is a strong and durable metal bodied cable seal, with the lock body encapsulated in ABS shock proof plastic. The non-preformed wire is designed to fray when cut, providing enhanced security.

APPLICATIONS

- Oil & Energy
- LACT Units
- Tank trucks
- Pipelines
- Storage tanks
- Containers
- Truck trailers
- Multi-use cable seal

FEATURES

- Single-use cable security seal.
- Toolless application by hand.
- Removal by cable cutter.
- Longer plastic lock body provides ample print space for laser marking on seal.
- Non-preformed galvanized cable unravels when cut to prevent resealing.
- Customizable wire lengths to suite multiple applications.
- Optional encapsulated wire tips for OH&S
- Wire diameter: 1 mm
- Standard wire length: 12" (30 cm). (Any length is available!)

CUSTOMIZATION

- Customized logo, name, number and barcode available at 2 month's lead time.
- Need customized seals faster? Talk to Seals HQ about our RUSH SERVICE.

TECHNICAL SPECIFICATIONS

Pull Strength : 450 LBF / 204 KGF
 Material : Lock body: Zinc Wire: Galvanized steel. Locking insert: Steel.
 Marking : Laser Printing – Company name, logo, unique sequential numbers and barcode
 Available Colours : White, Red, Blue, Green, Yellow, Orange, Black

PACKAGING

1000 pcs per Carton
 Box Dimensions : 15" x 12" x 9"
 Box Weight : 29 lbs

CONTACT SEALS HQ

Pho : 1-800-235-4105
 Web : <https://www.sealshqusa.com>
 Email : info@sealshqusa.com

ADDITIONAL FEATURES



Non-preformed Wire



Encapsulated Tips

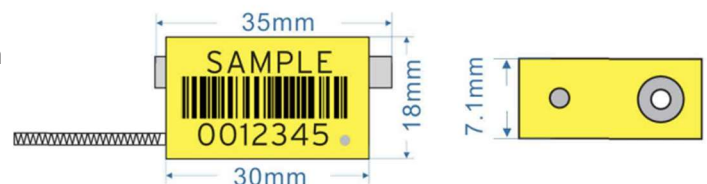


Patented Locking



Longer Body

PRODUCT DRAWING



CABLE SEAL